

CONSILIUL JUDETEAN PRAHOVA  
DIRECTIA GENERALA DE ASISTENTA SOCIALA  
SI PROTECTIA COPILULUI PRAHOVA  
CENTRUL DE PLASAMENT  
CAMPINA

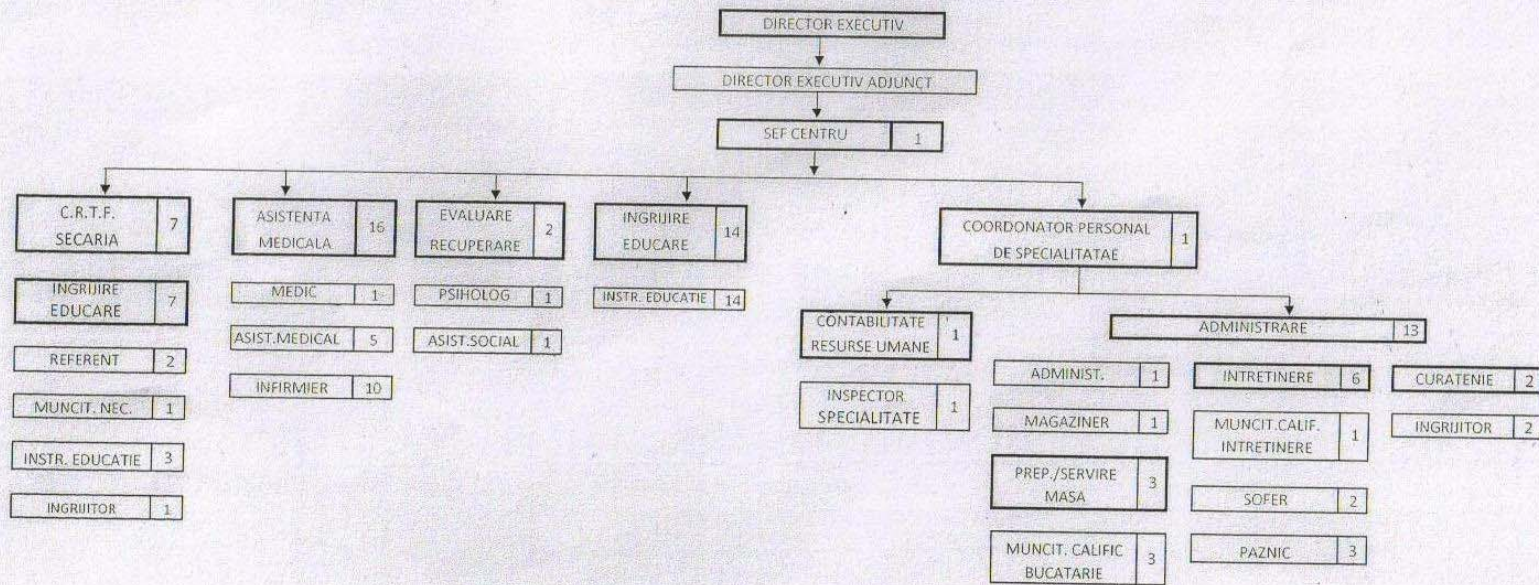


Se aproba  
DIRECTOR EXECUTIV  
FLOREA VASILICA

4

TOTAL GENERAL	55
din care:	
functii de conducere	2
functii de executie	53

ORGANIGRAMA



DIRECTOR EXECUTIV ADJUNCT  
BICIOACA ALEXANDRU