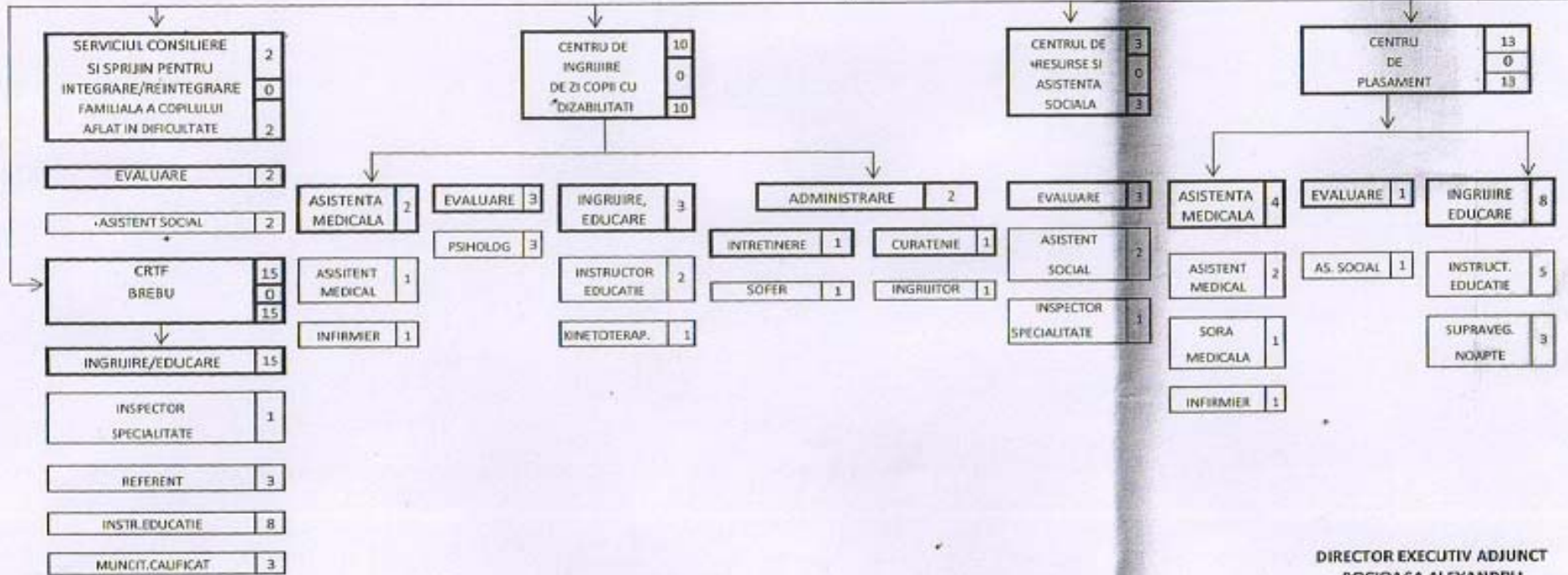
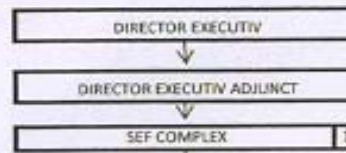


DIRECTIA GENERALA DE ASISTENTA SOCIALA  
SI PROTECTIA COPILULUI PRAHOVA  
COMPLEXUL DE SERVICII COMUNITARE "SF.FILOFTEIA" CAMPINA

TOTAL GENERAL	52
din care:	
Functii conducere	2
Functii executie	50



DIRECTOR EXECUTIV ADJUNCT  
BOCIOACA ALEXANDRU

Se aproba  
DIRECTOR EXECUTIV  
FLOREA VASILICA

