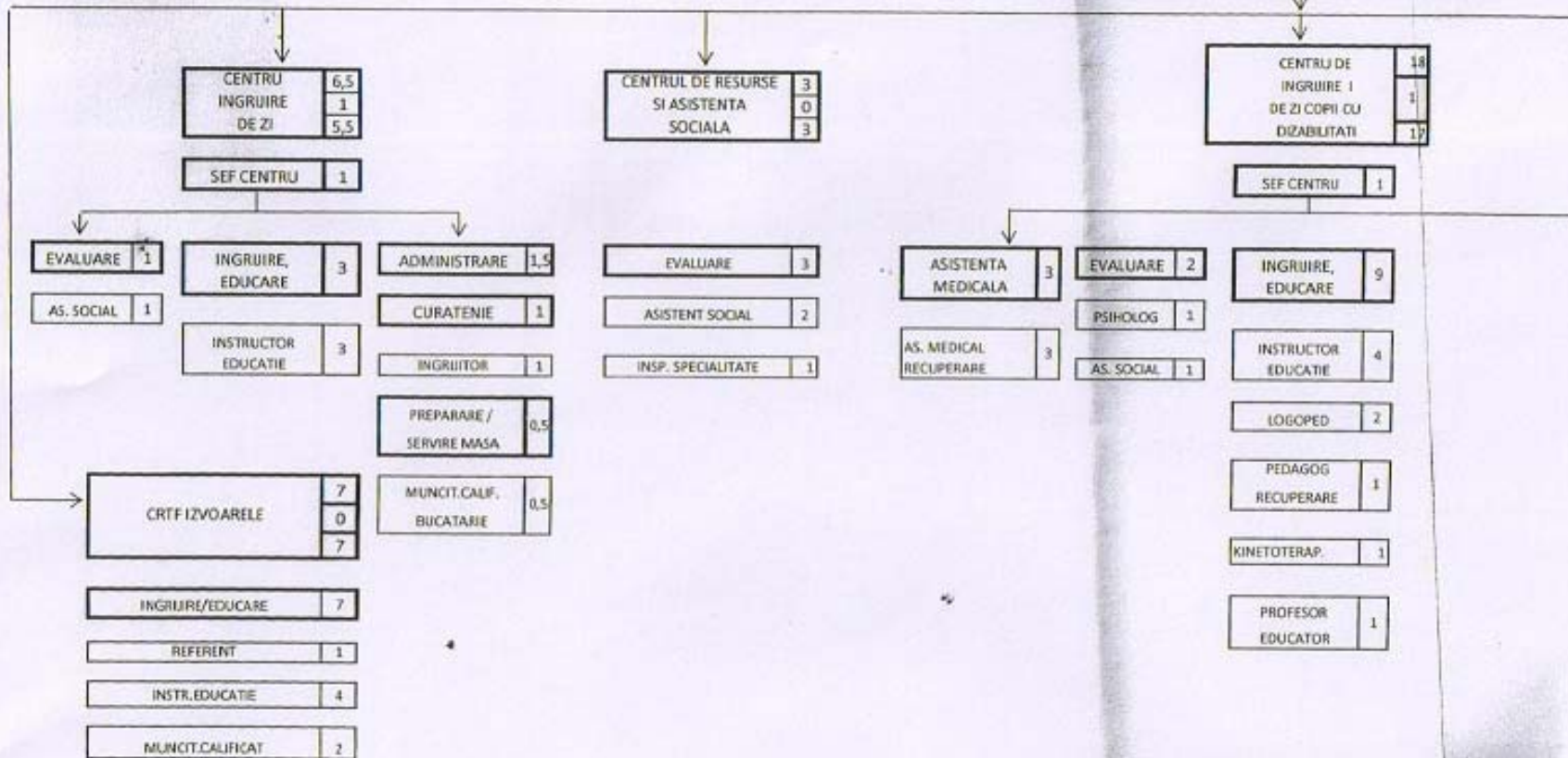
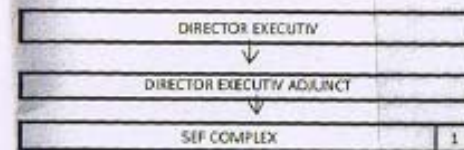


COMNSILIUL JUDETEAN PRAHOVA
 DIRECTIA GENERALA DE ASISTENTA SOCIALA
 SI PROTECTIA COPILULUI PRAHOVA
 COMPLEXUL DE SERVICII COMUNITARE "SFANTA MARIA" VALENII DE MUNTE

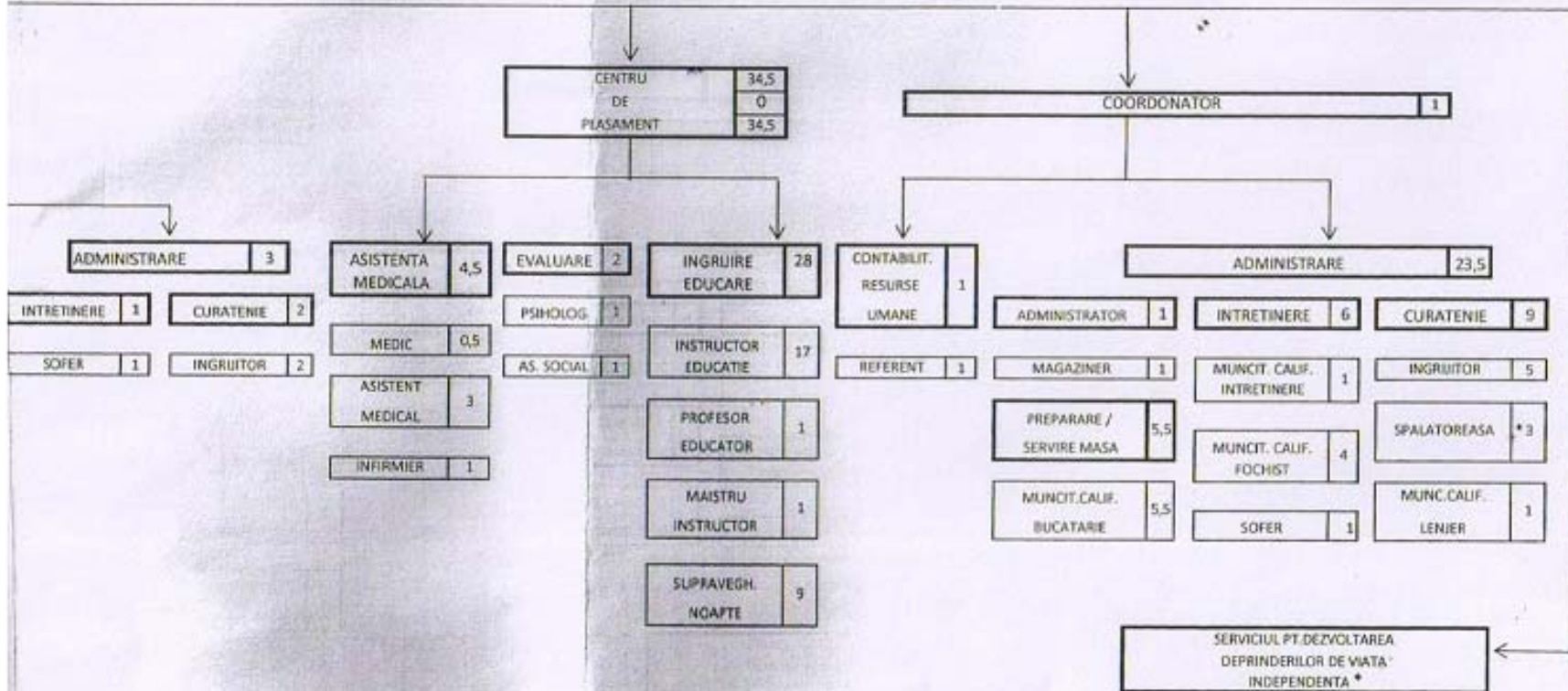
TOTAL GENERAL	94,5
din care:	
functii de conducere	4
functii de executie	90,5

ORGANIGRAMA



DIRECTOR EXECUTIV ADJUNCT
 BOCIOACA ALEXANDRU

Se aproba
DIRECTOR EXECUTIV
FLOREA VASILICA



* Personalul serviciului va fi asigurat de C.S.C. "St. Maria" Valeni de Munte, p/in completarea responsabilitatilor specifice noului serviciu in fisele de post ale unor salariati care lucreaza in cadrul complexului.
(1 psiholog; 1 asistent social; 3 instructori educatie; 2 asistenti medicali; 3 supraveghetori noapte;)