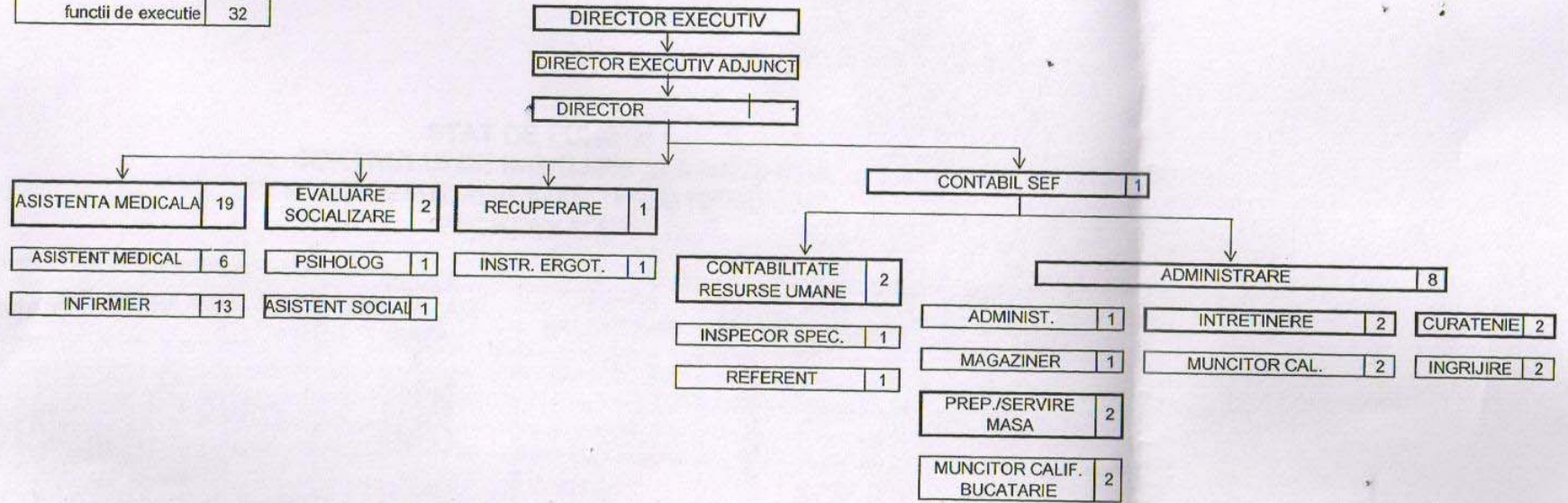


CONSILIUL JUDETEAN PRAHOVA
 DIRECTIA GENERALA DE ASISTENTA SOCIALA
 SI PROTECTIA COPILULUI PRAHOVA
 CENTRUL DE INGRIJIRE SI ASISTENTA
 PENTRU PERSOANE ADULTE CU HANDICAP
 PUCHENII MARI



TOTAL GENERAL	34
din care:	
functii de conducere	2
functii de executie	32

ORGANIGRAMA



CONTABIL SEF
 DOBREA CONSTANTIN

Handwritten signature of Dobrea Constantin

ANEXA NR.1/01.02.2011A COLEGIULUI DIRECTOR AL D.G.A.S.P.C.PRAHOVA

DIRECTOR CALIFICAT					
SECRETAR GENERAL					
MUNCITOR CALIFICAT					
BUC					
TOTAL					