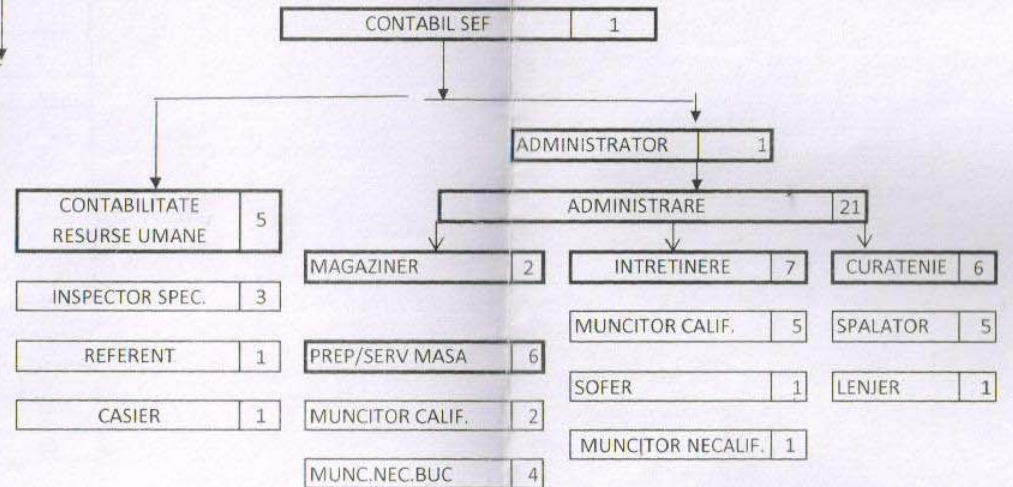
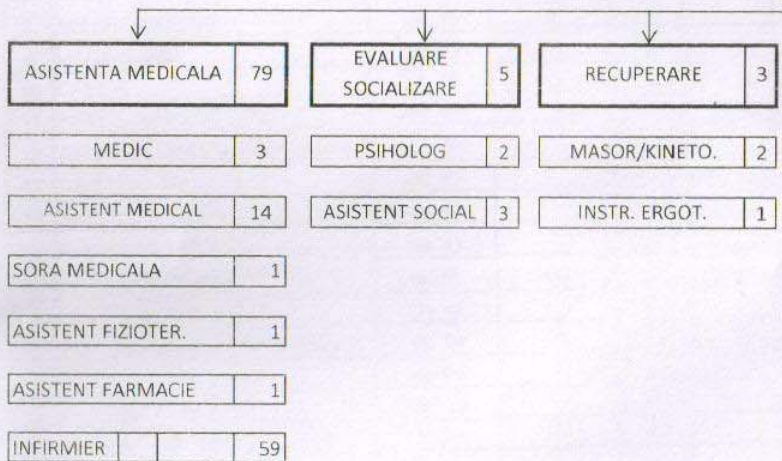
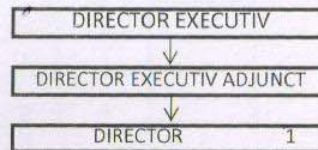


DIRECTIA GENERALA DE ASISTENTA SOCIALA
SI PROTECTIA COPILULUI PRAHOVA
CENTRUL DE INGRIJIRE SI ASISTENTA
PENTRU PERSOANE ADULTE CU HANDICAP MISLEA

TOTAL GENERAL	116
din care:	
functii de conducere	2
functii de executie	114

ORGANIGRAMA



Se aproba,
DIRECTOR
dr. Ionescu Gabriela C.



LA HOTARAREA NR.9 / 03.11.2010 A COLEGIULUI DIRECTOR AL DGASPC